



G:\ETEnv Documents\PROJECTS\COLLIER\Kings Lake\GIS\Lake Management Map.mxd / 5:14:32 PM

Project

Kings Lake HOA
Collier County, Florida

Map Type

Kings Lake
Aerial Map - Lake 1

Date

03/03/21



G:\ETEnv Documents\PROJECTS\COLLIER\Kings Lake\GIS\Lake Management Map.mxd / 5:14:32 PM



Note:
2020 Aerial & Subject Property boundary
obtained from Collier County Property Appraiser

- Lake Bank Perimeter
- Existing Littoral Plant Areas
- Storm Drains
- Laboratory Sample Locations
- Field Parameter Sample Locations

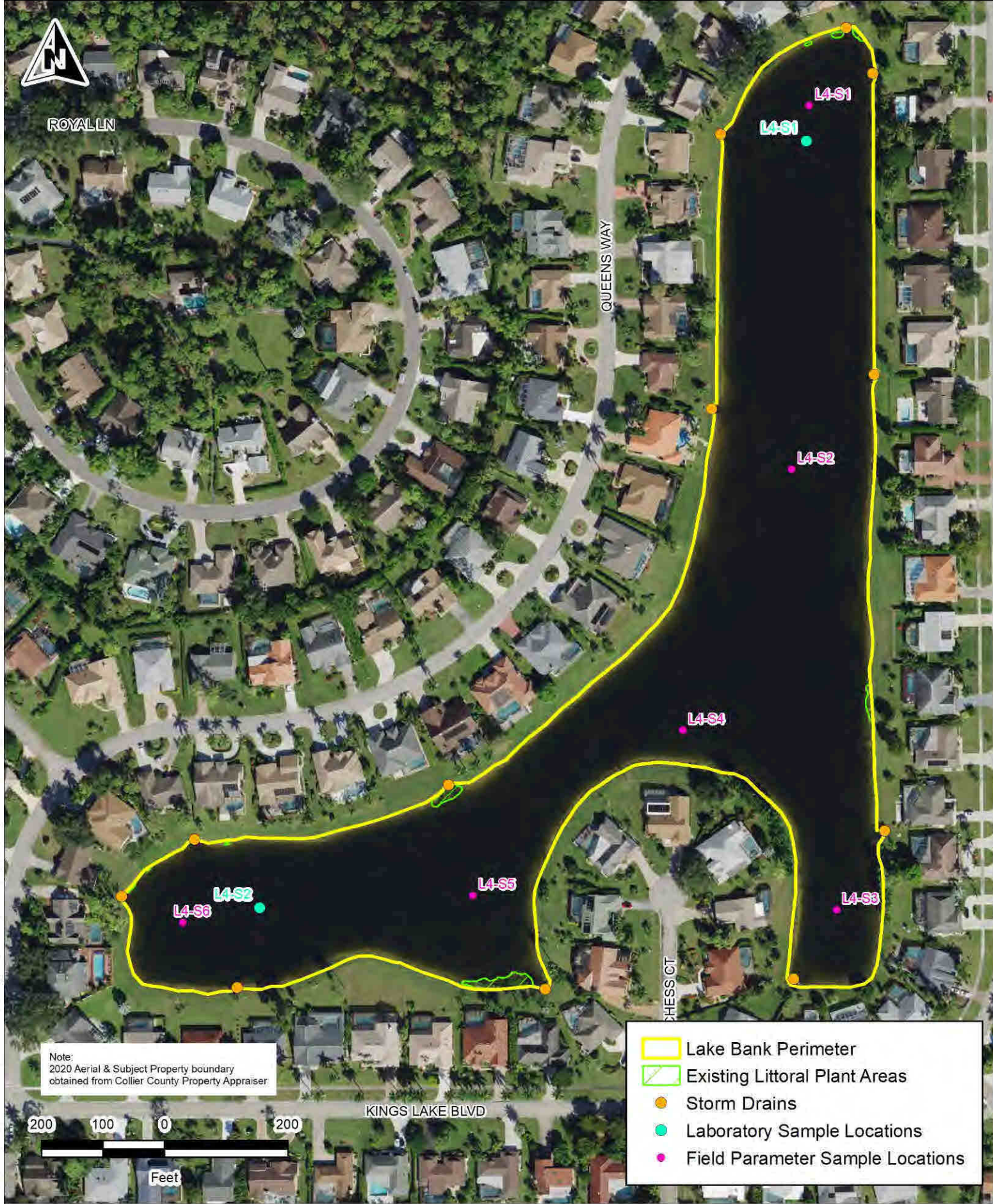
Project **Kings Lake HOA**
Collier County, Florida

Map Type **Prince Lake**
Aerial Map - Lake 2

Date **03/03/21**



G:\ETEnv Documents\PROJECTS\COLLIER\Kings Lake\GIS\Lake Management Map.mxd / 5:14:32 PM



Note:
2020 Aerial & Subject Property boundary
obtained from Collier County Property Appraiser

- Lake Bank Perimeter
- Existing Littoral Plant Areas
- Storm Drains
- Laboratory Sample Locations
- Field Parameter Sample Locations



Project
Kings Lake HOA
Collier County, Florida

Map Type
Duchess Lake
Aerial Map - Lake 3

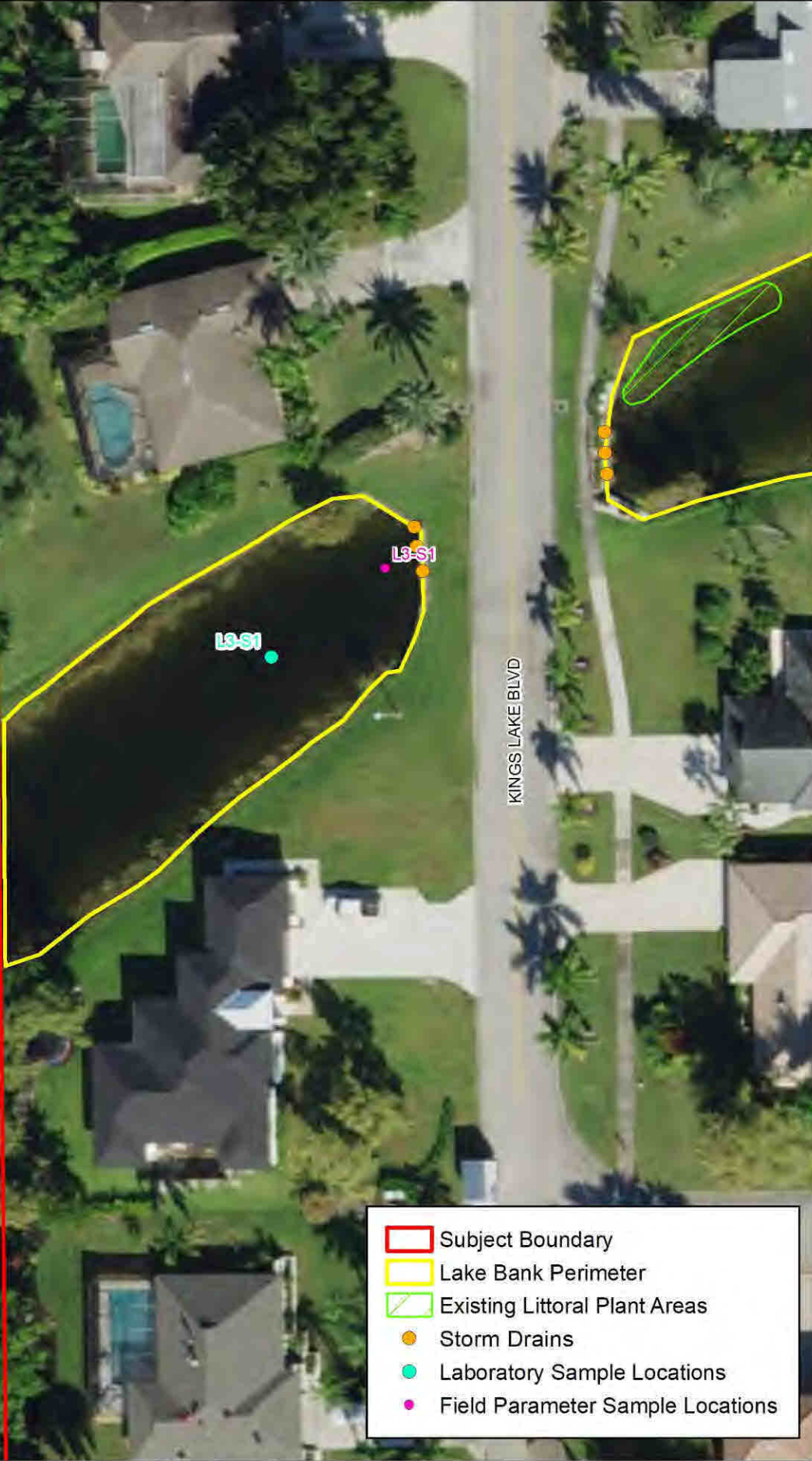
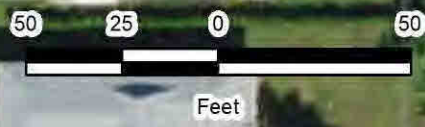
Date
03/03/21











G:\ETEnv\Documents\PROJECTS\COLLIER\Kings Lake\GIS\Lake Management Map.mxd / 5:14:32 PM

Note:
2020 Aerial & Subject Property boundary
obtained from Collier County Property Appraiser



-  Subject Boundary
-  Lake Bank Perimeter
-  Existing Littoral Plant Areas
-  Storm Drains
-  Laboratory Sample Locations
-  Field Parameter Sample Locations

Project Kings Lake HOA
Collier County, Florida

Map Type Aerial Map - Lake 4

Date 03/03/21

